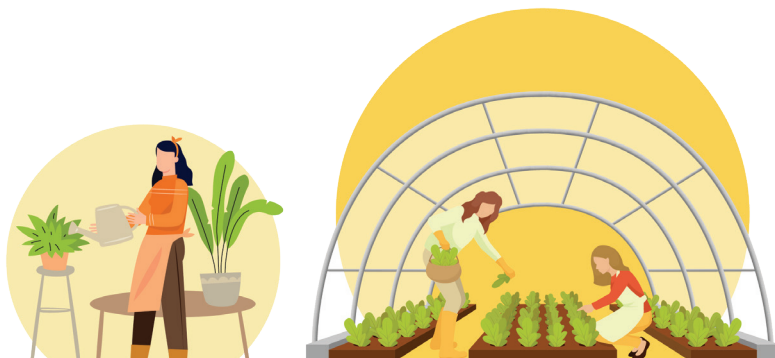




Spring Everyday

The latest in farm automation technology from the AUXO platform highlights its easy-to-install and easy-to-use system, which even first-time growers can efficiently use. The system can start from small setups and scale up to a plant factory level, with all growing aspects taken care of by AUXO farm automation and its AUXO application that provides 24-hour monitoring.



With AUXO, cultivating plants has never been easier, even for novices, delivering professional-level results with less effort. The system is designed to be user-friendly, catering to anyone interested in experimenting or starting vegetable cultivation or modern agriculture. Additionally, it can be expanded or customized to function as a plant factory system. Regardless of the complexity or size of the setup, users will still experience the same ease of maintenance.



AUXO smart farm can accommodate any type of cultivation method, including hydroponics, soil-based, and even aquascape, supporting a wide range of plants, both easy and challenging to grow. It can handle multiple types of sensors and environmental controls to cater to various growing methods, which AUXO has prepared to support all possible cultivation scenarios



Users can monitor their crops from anywhere with AUXO farm automation and cloud services along with a mobile application that provides 24/7 access to their farm's status. Beside monitor your crop. You can join Auxo user community to share trip/trick or buy/sell your produce. AUXO smart farm aims to make agriculture more accessible and user-friendly, and users can consult our team to experience something new and revolutionary with AUXO in the world of plant cultivation.



throughwave

Throughwave (Thailand) Co., Ltd.

Tel: +66 (2) 210 0969 | Fax: +66 (2) 210 0980 | Email: info@throughwave.co.th

www.facebook.com/throughwave.connect | [@throughwave](https://www.linkedin.com/company/throughwave)

<http://www.throughwave.co.th> | Thai CC Tower, 23rd FL., RM.234 43 South Sathorn Rd., Sathorn, Bangkok 10120